

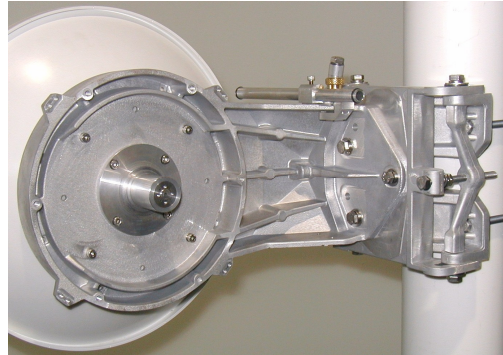
## 71.0 - 86.0 GHz High Performance Parabolic Antennas

Features:

- Superior Radiation Efficiency
- Meets FCC Part 101.115 (80 GHz)  
1-ft meets ETSI EN 302 217-4-2v1.5.1 Class 3  
2-ft meets ETSI EN 302 217-4-2v1.5.1 Class 2  
3-ft meets ETSI EN 302 217-4-2v1.5.1 Class 3
- Linear Polarization, Dual Polarization option available
- Integrated direct waveguide connect design options available
- 1-ft - Sturdy weather resistant plastic reflector & radome.
- 2 & 3-ft - Sturdy aluminum one piece construction reflector, shroud assembly & weather resistant radome
- Compact, rugged aluminum mount design using corrosion resistant materials, stainless steel hardware
- Superior fine azimuth and elevation adjustment
- Survival ratings: 125 mph wind / 1 inch ice
- Operate wind: 70 mph
- Optional sight alignment tool available
- Pre-assembled, ready to install
- HRP1-800 – 14 lbs (6.35 kg)  
HRP2-800 – 20 lbs (9.07 kg)  
HRP3-800 – 36 lbs (16.32 kg)



HRP3-800



Mount with Optional Sight Alignment Tool

71.0 - 86.0 GHz High Performance Parabolic Antennas

### Electrical Specifications

Model No.	Frequency GHz	Pol.	Size		Gain, nominal dBi			HPBW Deg.	Xpol dB	F/B dB	VSWR	R.L. dB
			ft.	m	Low	Mid	High					
HRP1-800	71.0-86.0	H or V	1	0.3	44.0	45.0	45.6	0.8	>35	>64	1.4:1	15.6
HRP2-800	71.0-86.0	H or V	2	0.6	50.0	51.0	51.4	0.5	>35	>71	1.4:1	15.6
HRP3-800	71.0-86.0	H or V	3	0.9	53.0	54.0	54.3	0.3	>35	>74	1.4:1	15.6